



 **CHIEF TOWER**

私有永久產權  
**FREEHOLD**



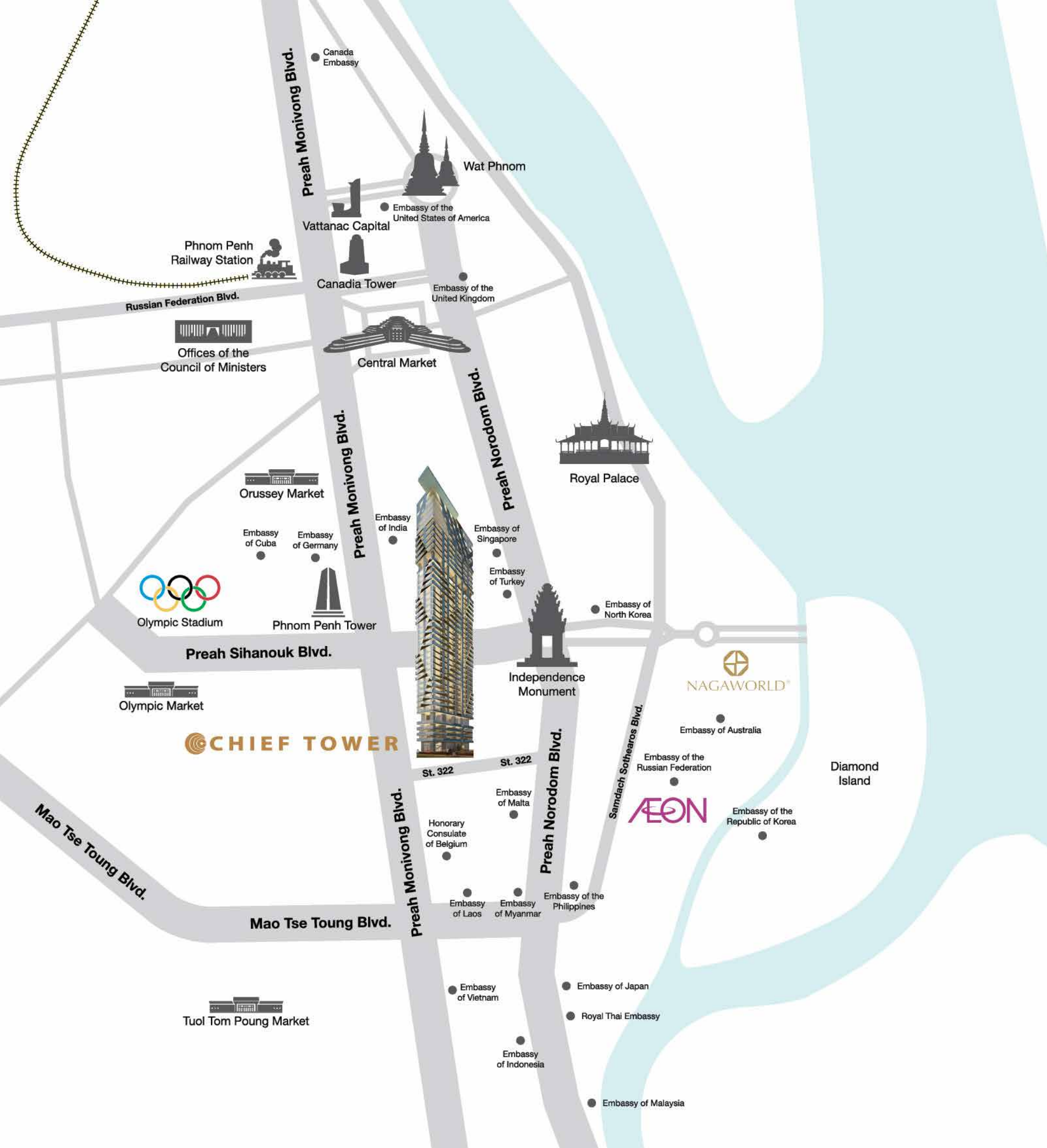
在金邊心臟冉冉昇起  
的標誌性建築

AN ICON **RISING**

in the heart of  
Phnom Penh.







# 奔景康一區

## Boeung Keng Kang 1 (BKK 1)

### 優越地理位置

昌盛的商業、娛樂業、休閒業及觀光勝地

A TRULY PREMIUM ADDRESS  
With Thriving Business Entertainment, Leisure & Attraction.



### 高級區域

周邊生活機能極佳

### 優裕居住區

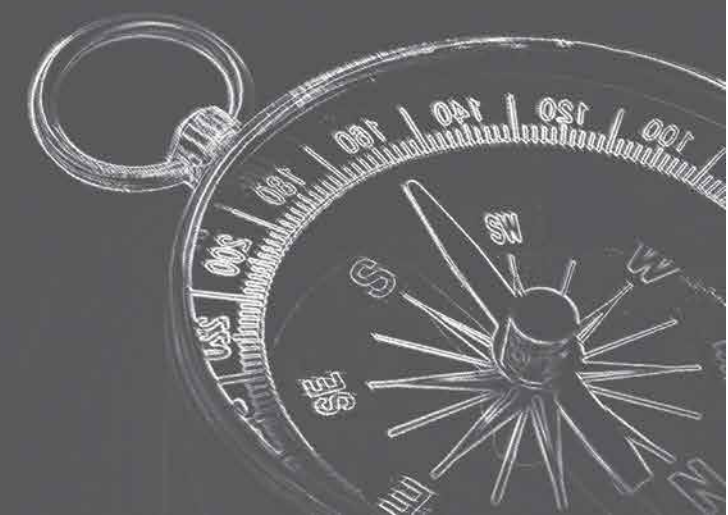
迎合職業外派與外籍人

A truly  
premium address

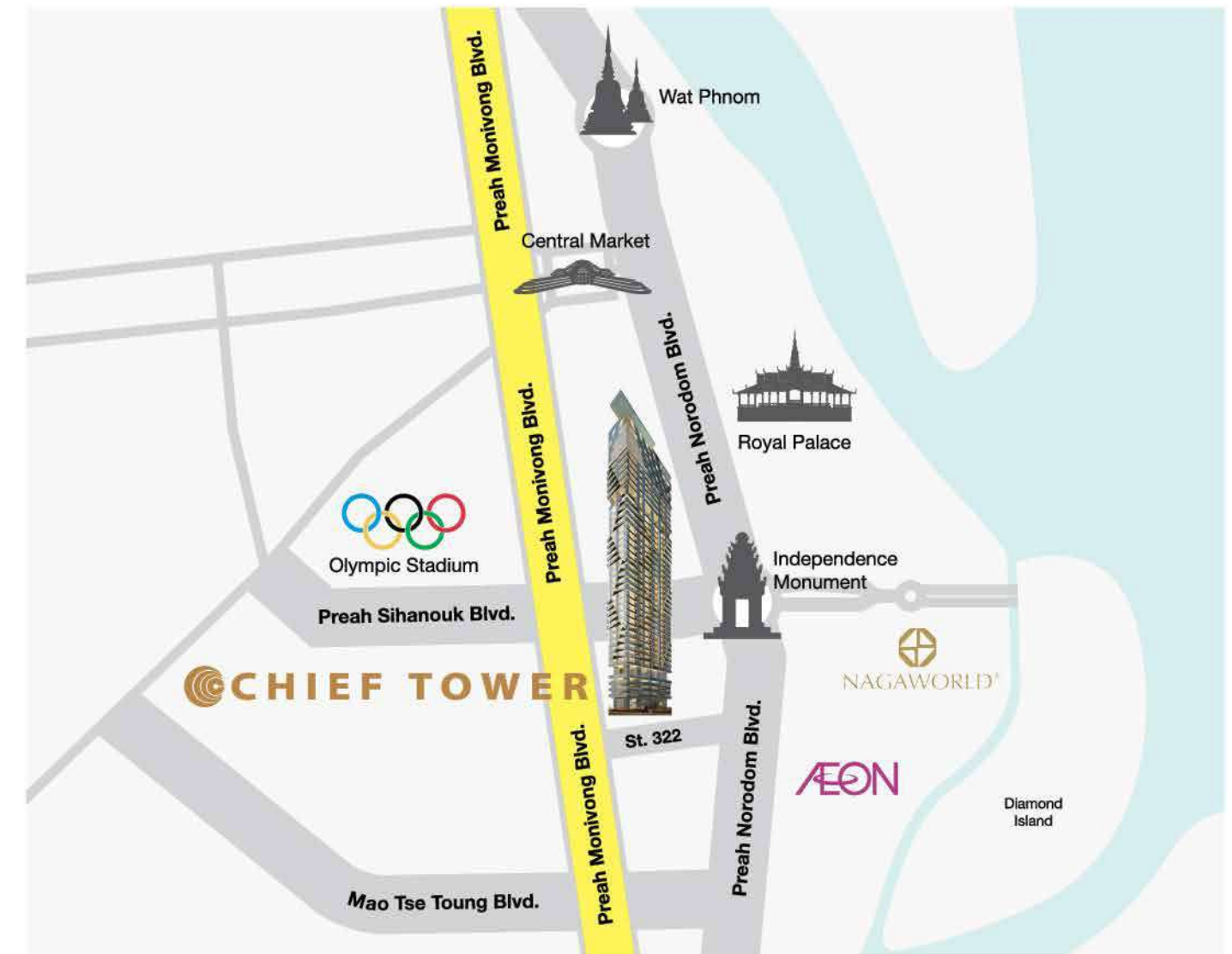
with many conveniences  
nearby

Affluent residential  
area catering

to expats and foreigners







## 莫泥旺大道

最繁忙、最龐大的商圈大道

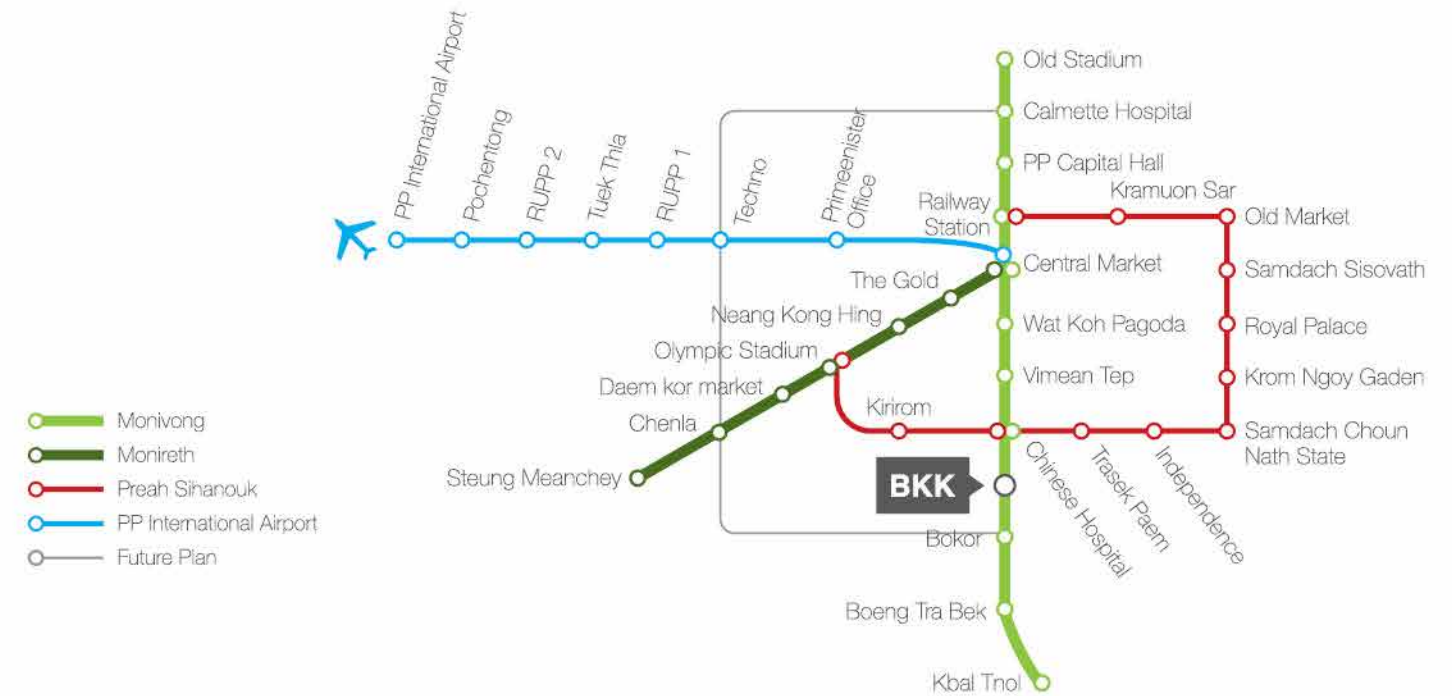
### PREAH MONIVONG BLVD

the busiest and the biggest business street



# 金邊捷運系統

## Phnom Penh Subway (Metro)



### 咫尺之遙

Chief Tower地理位置便利，離規劃中的金邊捷運站僅數步之遙

### On The Right Track.

Chief Tower is conveniently located just minutes from Phnom Penh's future Subway (Metro) stop.



### 公交通道四通八達

在這個繁華的200萬人口城市里，除了輕鬆通勤外，您還可以透過現代化的鐵路網，接連金邊每一個地方。

### Fast Track To Everywhere.

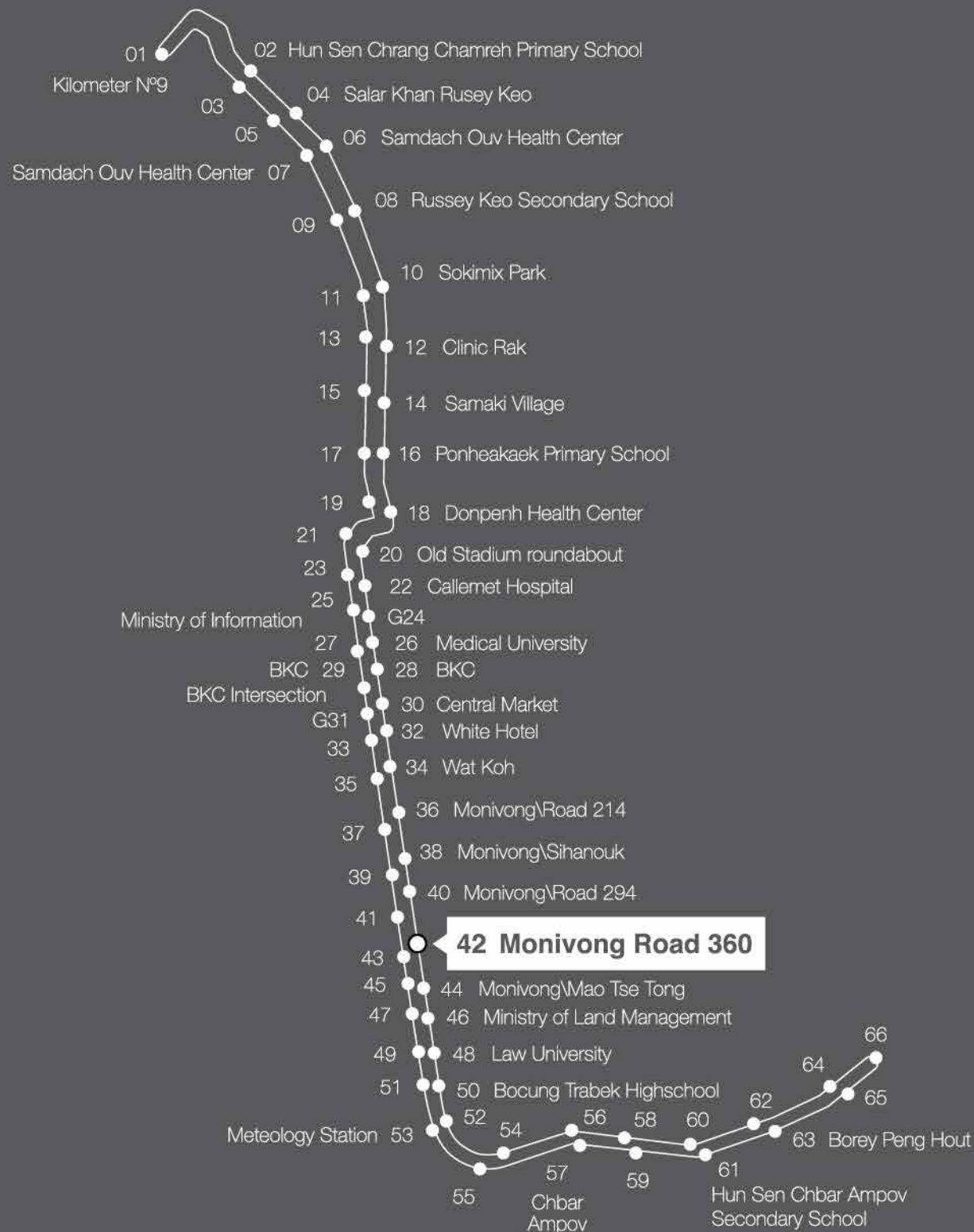
Expect nothing but easy commutes in this bustling city of 2 million and stay connected to everywhere on Phnom Penh's modern rail network.

快速通勤網絡  
FAST TRACK  
DAILY COMMUTES.



# 金邊公車路線

## Phnom Penh Bus Route



## 坐擁交通樞紐

### A TRANSPORT HUB

### FROM THE DOOR STEP



Chief Tower位於金邊市中心，擁有無可比擬的地區連通性。她被莫泥旺大道、諾羅敦大道、毛澤東大道和西哈努克大道環繞，在市內搭乘公車四處走走，是一件輕而易舉的事。

Chief Tower enjoys unparalleled connectivity at its home in the heart of Phnom Penh. Surrounded by 4 major roads – Monivong Boulevard, Norodom Boulevard, Mao Tse Dong Boulevard & Sihanouk Boulevard and serviced by the city's busses, getting around is really a breeze.



**158米**  
meter  
奔景康一區最高建築  
Tallest Building  
in BKK 1

飯店  
與服務  
公寓  
Hotel &  
Service Suite

辦公樓  
OFFICE

商舖  
RETAIL

店面  
SHOPLOT

頂樓懸空泳池  
ROOF TOP CANTILEVER POOL

塔冠設計  
TOP CROWN DESIGN

對角線設計  
DIAGONAL DESIGN

金邊首座  
擁有兩層架空層設計的大廈  
1ST EVER DOUBLE BREAK OUT  
FLOOR DESIGN IN PHNOM PENH

多層自動化地下停車場  
MULTISTOREY AUTOMATED  
UNDERGROUND CAR PARK

# 生活豐滿·富也安然

## LIVING LIFE · FULLNESS

舒適的飯店

HOTEL COMFORTS

辦公室設施

OFFICE FACILITIES

餐飲樂趣

F&B DELIGHTS

購物天堂

RETAIL HAVEN



## 世界級別

Chief Tower旨在啟發未來的創新者，  
它將成為金邊最大、最高的辦公大樓。

## SIMPLY WORLD CLASS

Designed to inspire tomorrow's innovators, Chief Tower is set to become the iconic and tallest office building in Phnom Penh.







頂樓懸空泳池  
ROOF TOP CANTILEVER  
POOL



158m  
奔景康一區最高建築  
TALLEST BUILDING IN  
BKK 1



金邊首座  
擁有兩層架空層設計的大廈  
1ST EVER DOUBLE BREAK  
OUT FLOOR DESIGN IN  
PHNOM PENH

## 華實相稱

Chief Tower貫徹“生活豐滿·富也安然”的概念，租戶和來訪者將能在此標誌性的現代化商業經營場址中體驗現代化的便利。從私人高級俱樂部到燕語鶯聲的金邊美景，從懸掛式泳池裡的恣意悠遊，到充滿異國情調且令人垂涎的餐飲選擇，都聚集到這裡來，讓您安然地飽嚙豐滿的生活。

憑藉著令人讚嘆的標誌性對角設計和塔冠設計，40層樓高的Chief Tower儼然已成為定制建築中的杰作。這是一座全市最高的混合用途商業大樓，具備前所未有的使用功能，為您重新詮釋工作、娛樂與奢華的定義。



## GOOD LOOKS. INSIDE OUT.

Chief Tower resonates the concept of “Living Life. Fullness” where tenants and visitors will experience modern conveniences within an iconic modern commercial establishment. From a private exclusive club to unmatched views of Phnom Penh, refreshing moments atop its cantilever infinity pool to dining options that are both exotic and mouthwatering, come and delight in the fullness of life here. Unlike anywhere else.

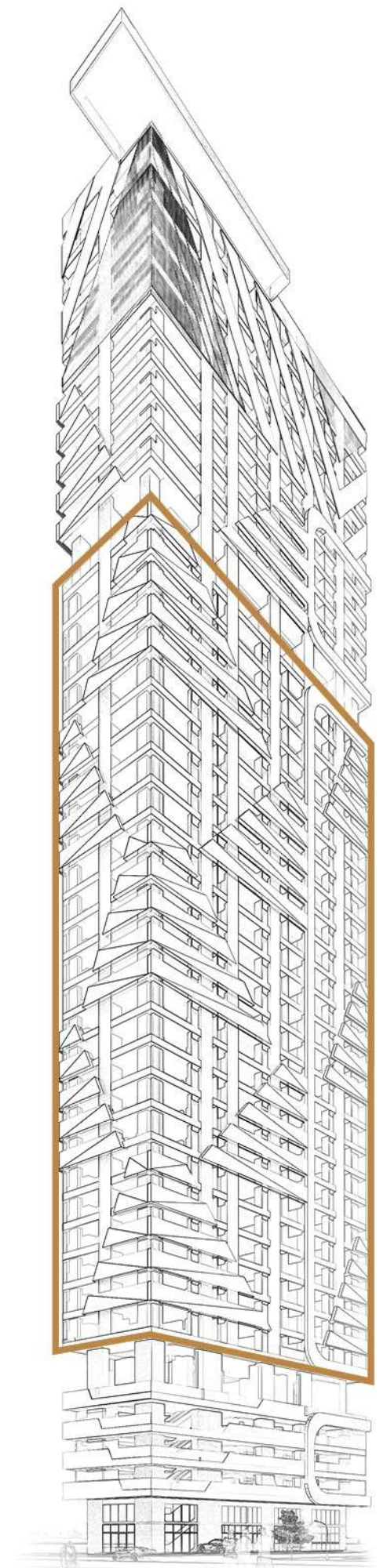
With its stunning and iconic diagonal facade and top crown design, Chief Tower is a bespoke architectural masterpiece standing at 40 storeys. It's the tallest mix-use building in the BKK 1, Phnom Penh with every conceivable feature to complement the way we Work, Play & Luxuriate.



辦公樓 OFFICE

**TALLEST**  
BUILDING IN BKK 1  
1<sup>ST</sup> EVER CANTILEVER  
SWIMMING POOL  
BREAKOUT FLOOR  
**METRO STATION**  
AWARD WINNING  
**DEVELOPER**

Level 6 - 29







精通商務  
準備就緒

BUSINESS  
**SAVVY.**  
BUSINESS  
**READY.**



Chief Tower 備受萬眾期待，尖端的設施、綜合網絡功能和動態性現代活動空間，極度適合游牧商人及創業團隊的進駐，尤其是渴望將其業務提昇至更高水平的強勁企業。

The next level of business premises await at Chief Tower. Cutting edge facilities and features deliver integrated networking, contemporary spaces on functional dynamic floor plans, perfect for business nomads, startup teams or corporate powerhouses eager to take their business to the next level.

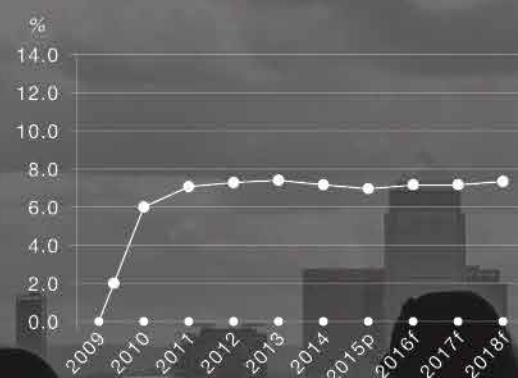


## 柬埔寨國內生產總值增長

### GDP Growth in Cambodia

隨著旅遊業和成衣業，以及穩定的政治環境支撐著蓬勃發展的建造業，未來數年，柬埔寨的GDP增長率預計將保持在7.0%的平均水平。

With a healthy **tourism and garment sector**, and a booming **construction sector** underpinned by a stable political environment, Cambodia's GDP growth is forecast to remain an average of 7.0% in the coming years.



來源：經濟與財政部  
Source: Ministry of Economy

## 主要投資國的直接投資額

### Investment Approvals by Major Countries 百萬美元 (USD millions 2011 – 2016)

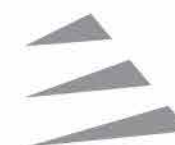
國家 Country	2011	2012	2013	2014	2015	2016	2011 – 2016 Total	
								排名 Rank
柬埔寨 Cambodia	2,351	1,220	3,273	2,496	3,187	992	13,604	-
中國 China	1,741	600	768	953	857	1,077	5,911	1
日本 Japan	66	265	78	67	59	820	1,355	2
越南 Vietnam	683	84	299	49	88	88	1,292	3
韓國 Korea	166	287	86	65	10	165	779	4
馬來西亞 Malaysia	239	175	51	85	74	-	625	5
泰國 Thailand	-	131	214	34	54	166	600	6
英國 UK	245	15	21	44	138	-	463	7
新加坡 Singapore	16	75	50	35	100	109	386	8
美國 US	141	12	-	-	-	122	275	9
澳洲 Australia	25	-	-	20	-	-	44	10
其他 Others	27	35	46	53	24	19	205	
總額 Total	5,700	2,900	4,900	3,900	4,600	3,600	25,600	-

來源：柬埔寨發展理事會  
備註：採四舍五入關係，數字相加結果未必等於所列總數  
Source: Council for the Development of Cambodia  
Note: number do not tally due to rounding

“在石油與天然氣 ... 金融、保險業、房地產及商業服務等行業的帶動下，全球對柬埔寨辦公空間的中長期需求預計將持續增長。

The **Demand For Office Space** in Cambodia is expected to continue to **increase over the medium to long term**, driven by the Oil & Gas sector... and the Finance, Insurance, Real Estate and Business Services (FIREB) sectors...”

來源：萊坊研究  
Source: Knight Frank Research







# SIGNATURE 3 S FEATURES

## S 標榜着每一道細緻 SHOWCASE EVERY DETAIL.

### 豪華大廳

Chief Tower設有一個龐大的9米豪華大廳及配有最先進的設計，雄偉壯麗的前廳還將提供禮賓服務以及5星級的接待服務。

### 空中會議室

金邊天際線的風景盡收眼簾，有著完善的商務設備，租客和訪客們很容易在此找到他們的舒適區。

### 多層自動化地下停車場

Chief Tower是金邊第一座帶全自動代客停車系統的商業大樓。這種全自動的控制系統將能為租戶和訪客提供安全、便捷和高效的停車方式，只需開車進入，鎖定，自動提車系統即可接管。離開時，掃描的停車卡會顯示交付的大致時間。



### Grand Lobby

Chief Tower also features an oversized 9-meter high Grand Lobby with state-of-the-art design. The majestic and stunning Grand Lobby will also house a concierge service as well as 5-star rated reception services.

### Skyview Conference Room

A commanding view of Phnom Penh's skyline presents itself. With business conducive features and facilities, captains of industry easily find their comfort zone at Chief Tower.

### Multistorey Automated Underground Car Park

Chief Tower is set to be the first commercial building in Phnom Penh with a fully automated valet car parking system. This fully automatic, computer controlled system will offer tenants and visitors a safe, convenient and efficient way of parking their vehicles. Just drive in, lock up and the automated car park system will take over. Upon leaving, a scanned parking card tells the approximate time of delivery.





# SIGNATURE 3 S FEATURES

## S 卓越的設備 SERVICE EXCELLENCE

### 商務貴賓中心及休息室

完備的會議室、理想的社交平台，同時也是擺脫工作壓力的理想場所。

### 頂樓懸空泳池

在金邊唯一的頂樓懸空泳池暢遊，享受著清涼、溫暖的熱帶下午，俯瞰城市全景，感受前所未有的放鬆體驗。

### 設備齊全的健身房

一個設備齊全的健身房補充了現代生活式的需求，所以每個人都可以在這裏輕鬆地落實每一個健身計劃。



### Business Premium Lounge

Perfect for quiet meetings, networking sessions or just to have some quiet time, the Business Premium Lounge is the ideal venue to get away from the stress of the boardroom.

### Roof Top Cantilever Swimming Pool

Enjoy warm tropical afternoons and refreshing dips at the only Roof Top Cantilever swimming pool in Phnom Penh. Coupled with panoramic sights of the city, the experience here is divine.

### Full Facilities Gym

A comprehensively-equipped Gymnasium complements modern lifestyle needs so everyone can keep up to every fitness regime easily here.





# SIGNATURE 3 S FEATURES

## S 无可比拟的安全设施 AFETY & SECURITY UNMATCHED

### 顶尖的保安設備

通過完整的多層次保安系統以確保行動的自由和個人安危。

### 消防設備

Chief Tower提供完整的國際級別消防安全及防災功能系統，保障租戶住戶的安寧。

### 防火樓

Chief Tower關注大樓的消防安全設備。設備樓層亦作為防火樓層所用，它為大樓人員提供逃生梯外，另一個更安全的疏散通道。



### Top-Notch Security Features

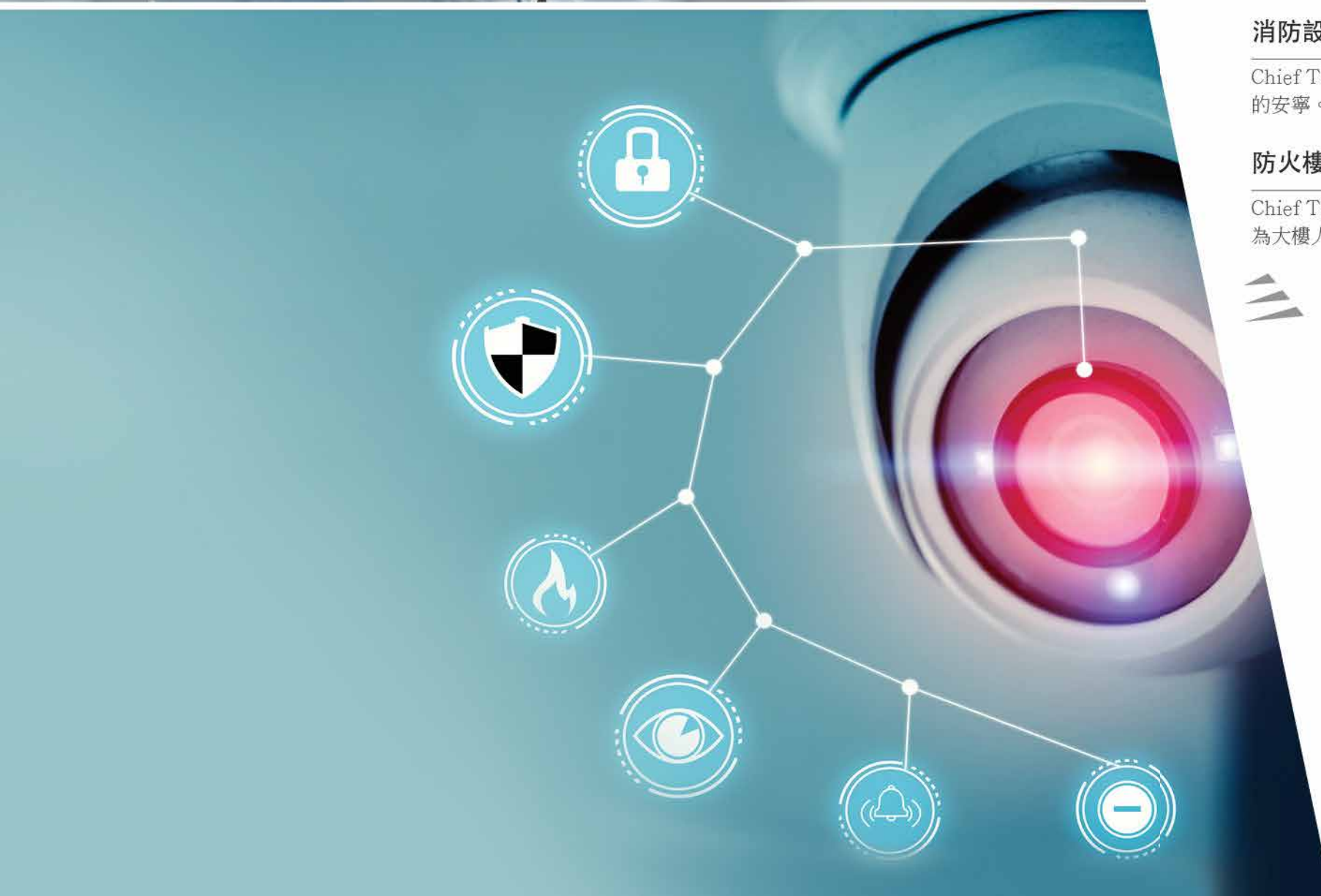
Experience complete peace-of-mind with an integrated multi-tier security system that ensures freedom of movement and safety always.

### Fire Safety Features

Chief Tower is also integrated with international-grade fire safety and prevention features to monitor everyone's wellbeing.

### Fire Safety Floor

Chief Tower has placed significant attention on fire safety. The facilities floors which also doubles as the fire safety floors alleviate the need for evacuees to travel great vertical distances on stairs when evacuating a building.





# 單元平面圖

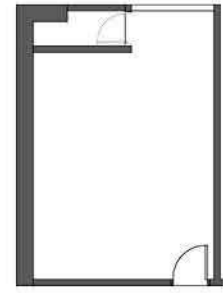
## UNIT PLAN

### A型

建築面積: 30平方米  
裸房單元

### TYPE A

Built-up area: 30m<sup>2</sup>  
BARE UNIT

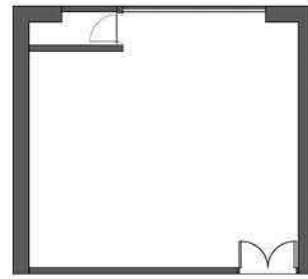


### B型

建築面積: 45平方米  
裸房單元

### TYPE B

Built-up area: 45m<sup>2</sup>  
BARE UNIT

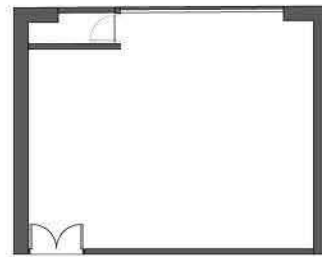


### C型

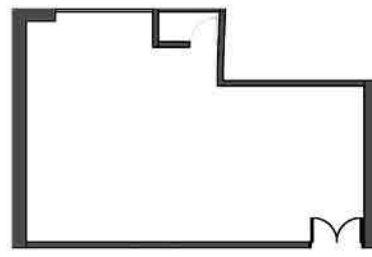
建築面積: 53平方米  
裸房單元

### TYPE C

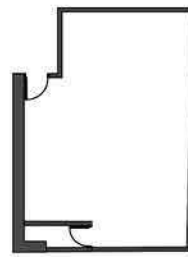
Built-up area: 53m<sup>2</sup>  
BARE UNIT



C1型|TYPE C1



C2型|TYPE C2



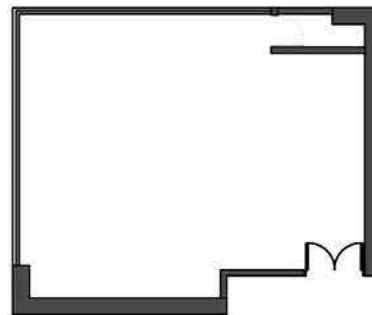
C3型|TYPE C3

### D型

建築面積: 63平方米  
裸房單元

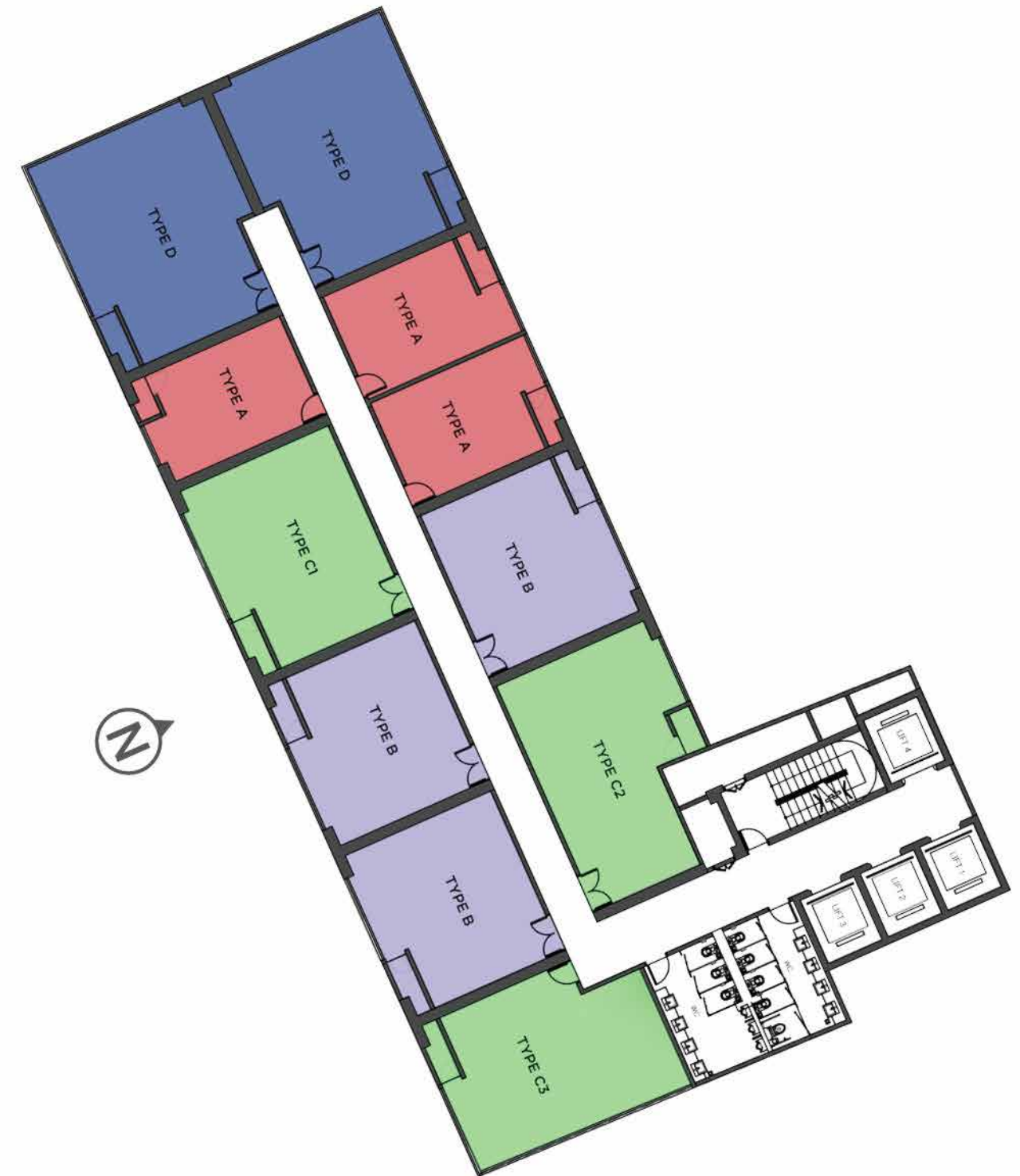
### TYPE D

Built-up area: 63m<sup>2</sup>  
BARE UNIT



# 樓層平面圖

## FLOOR PLAN



辦公樓

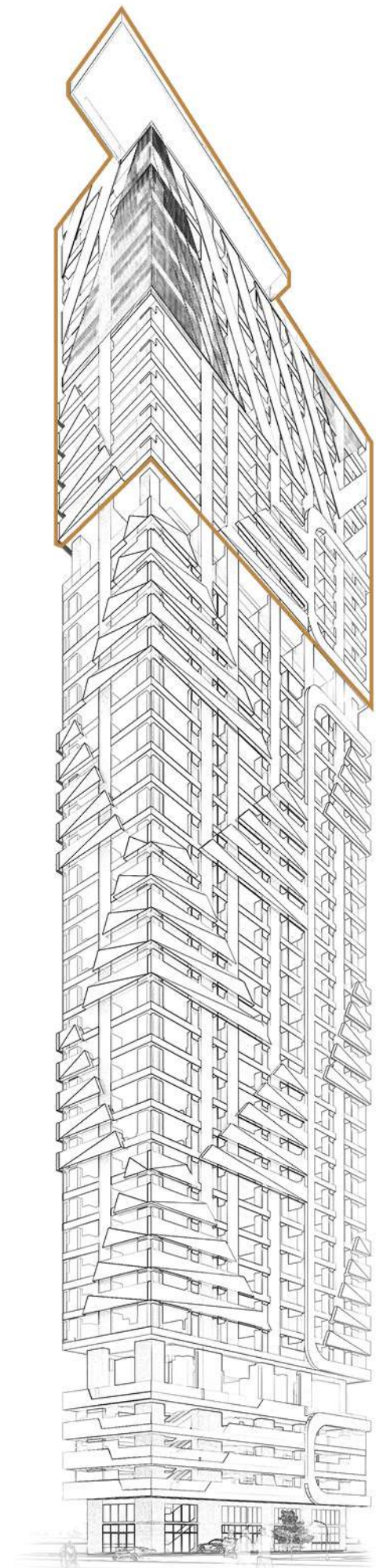
OFFICE



飯店及服務公寓  
HOTEL & SERVICE SUITE

TALLEST  
BUILDING IN BKK 1  
1<sup>ST</sup> EVER CANTILEVER  
SWIMMING POOL  
BREAKOUT FLOOR  
METRO STATION  
AWARD WINNING  
DEVELOPER

Level 31 - 39





# 單位平面圖

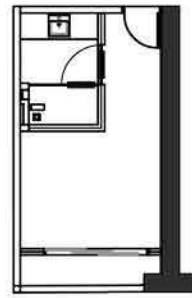
## UNIT PLAN

### A型

建築面積: 23平方米  
裸房單元

### TYPE A

Built-up area: 23m<sup>2</sup>  
BARE UNIT

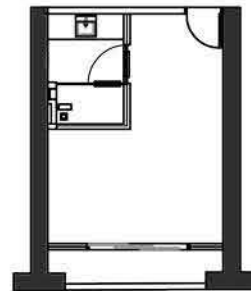


### B型

建築面積: 30平方米  
裸房單元

### TYPE B

Built-up area: 30m<sup>2</sup>  
BARE UNIT

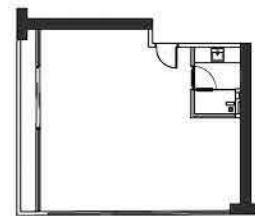


### C型

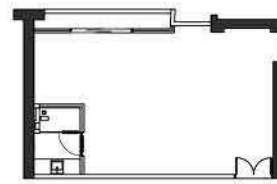
建築面積: 63平方米  
裸房單元

### TYPE C

Built-up area: 63m<sup>2</sup>  
BARE UNIT



C1型 | TYPE C1



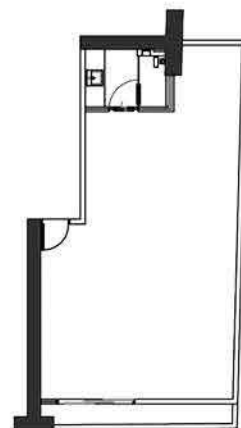
C2型 | TYPE C2

### D型

建築面積: 67平方米  
裸房單元

### TYPE D

Built-up area: 67m<sup>2</sup>  
BARE UNIT



# 樓層平面圖

## FLOOR PLAN



飯店及服務公寓

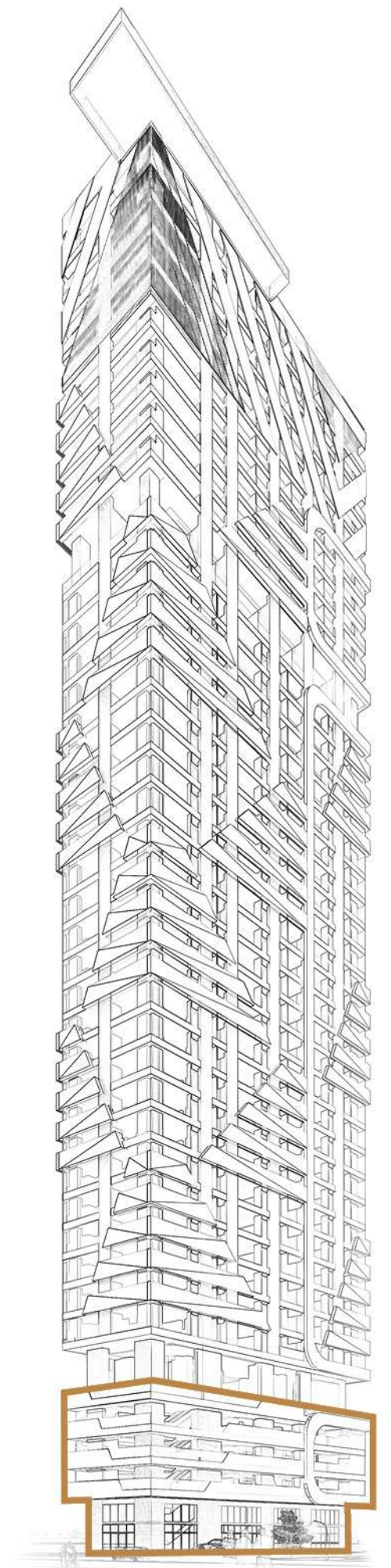
HOTEL & SERVICE SUITE



商鋪  
RETAIL

**TALLEST**  
BUILDING IN BKK 1  
**1<sup>ST</sup> EVER** CANTILEVER  
SWIMMING POOL  
BREAKOUT FLOOR  
**METRO STATION**  
AWARD WINNING  
**DEVELOPER**

Level 1 - 4





# 單元平面圖

## UNIT PLAN

### 單元A

建築面積: 61平方米  
裸房單元

### UNIT A

Build-up area: 61m<sup>2</sup>  
BARE UNIT

### 單元B

建築面積: 45平方米  
裸房單元

### UNIT B

Build-up area: 45m<sup>2</sup>  
BARE UNIT

### 單元C

建築面積: 52平方米  
裸房單元

### UNIT C

Build-up area: 52m<sup>2</sup>  
BARE UNIT

### 單元D

建築面積: 54平方米  
裸房單元

### UNIT D

Build-up area: 54m<sup>2</sup>  
BARE UNIT

### 單元E

建築面積: 54平方米  
裸房單元

### UNIT E

Build-up area: 54m<sup>2</sup>  
BARE UNIT

### 單元F

建築面積: 54平方米  
裸房單元

### UNIT F

Build-up area: 54m<sup>2</sup>  
BARE UNIT

### 單元G

建築面積: 49平方米  
裸房單元

### UNIT G

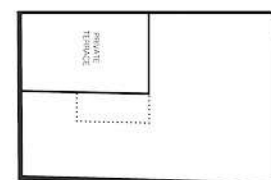
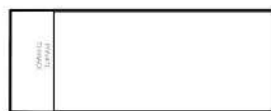
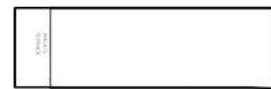
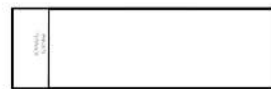
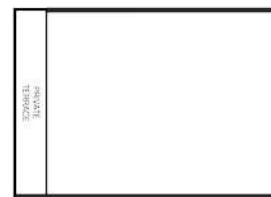
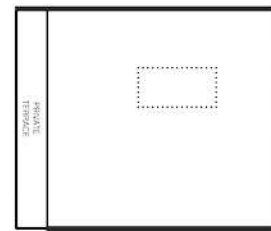
Build-up area: 49m<sup>2</sup>  
BARE UNIT

### 單元H

建築面積: 44平方米  
裸房單元

### UNIT H

Build-up area: 44m<sup>2</sup>  
BARE UNIT



# 樓層平面圖

## FLOOR PLAN



商舖

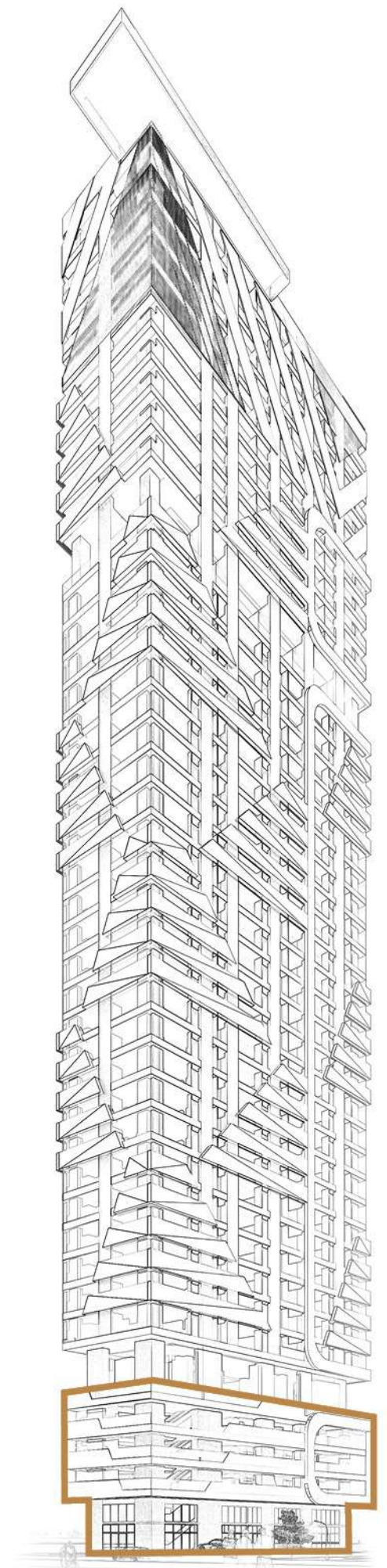
RETAIL



店面  
SHOPLOT

TALLEST  
BUILDING IN BKK 1  
1<sup>ST</sup> EVER CANTILEVER  
SWIMMING POOL  
BREAKOUT FLOOR  
METRO STATION  
AWARD WINNING  
DEVELOPER

Level 1 - 4





# 單元平面圖

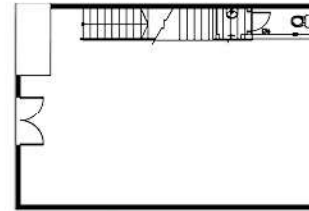
## UNIT PLAN

### 單元A

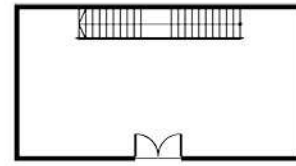
建築面積: 133平方米  
裸房單元

### UNIT A

Built-up area: 133m<sup>2</sup>  
BARE UNIT



一樓 | Ground Floor



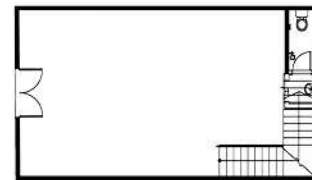
二樓 | Upper Ground Floor

### 單元B

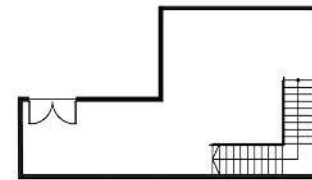
建築面積: 115平方米  
裸房單元

### UNIT B

Built-up area: 115m<sup>2</sup>  
BARE UNIT



一樓 | Ground Floor



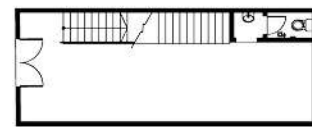
二樓 | Upper Ground Floor

### 單元C

建築面積: 88平方米  
裸房單元

### UNIT C

Built-up area: 88m<sup>2</sup>  
BARE UNIT



一樓 | Ground Floor



二樓 | Upper Ground Floor

### 單元D

建築面積: 88平方米  
裸房單元

### UNIT D

Built-up area: 88m<sup>2</sup>  
BARE UNIT



一樓 | Ground Floor



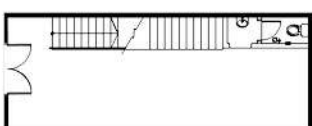
二樓 | Upper Ground Floor

### 單元E

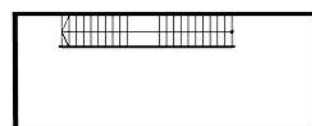
建築面積: 88平方米  
裸房單元

### UNIT E

Built-up area: 88m<sup>2</sup>  
BARE UNIT



一樓 | Ground Floor



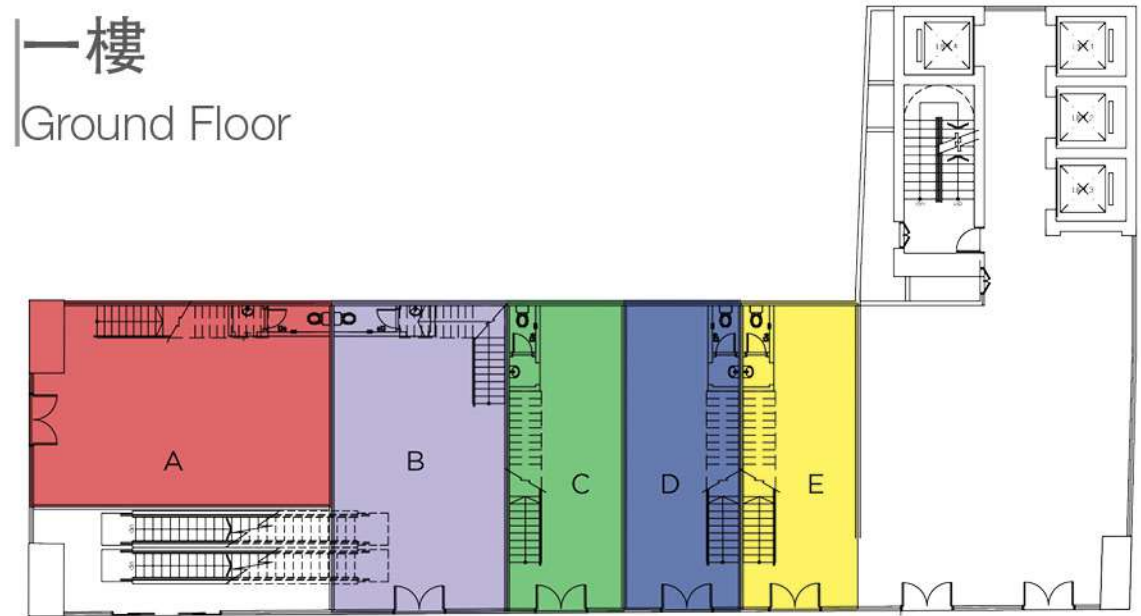
二樓 | Upper Ground Floor

# 樓層平面圖

## FLOOR PLAN

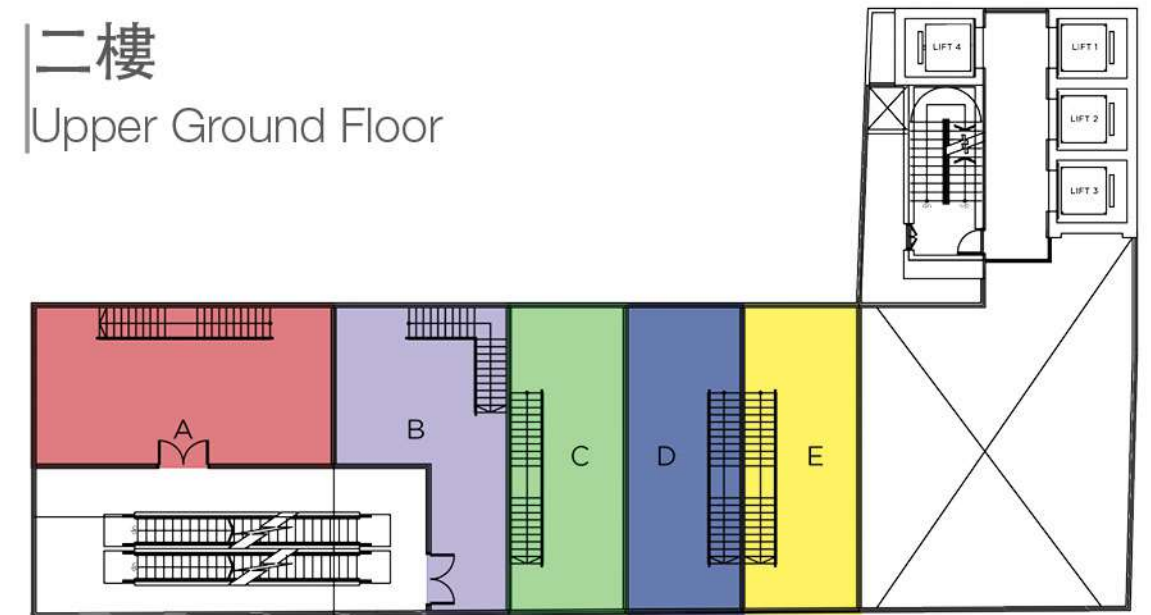
### 一樓

Ground Floor



### 二樓

Upper Ground Floor



店面

SHOPLOT





# 得獎開發商 AWARD WINNING DEVELOPER



## ASEAN MASTER CLASS AWARDS 2017

Property Development Excellence  
 Cambodia

